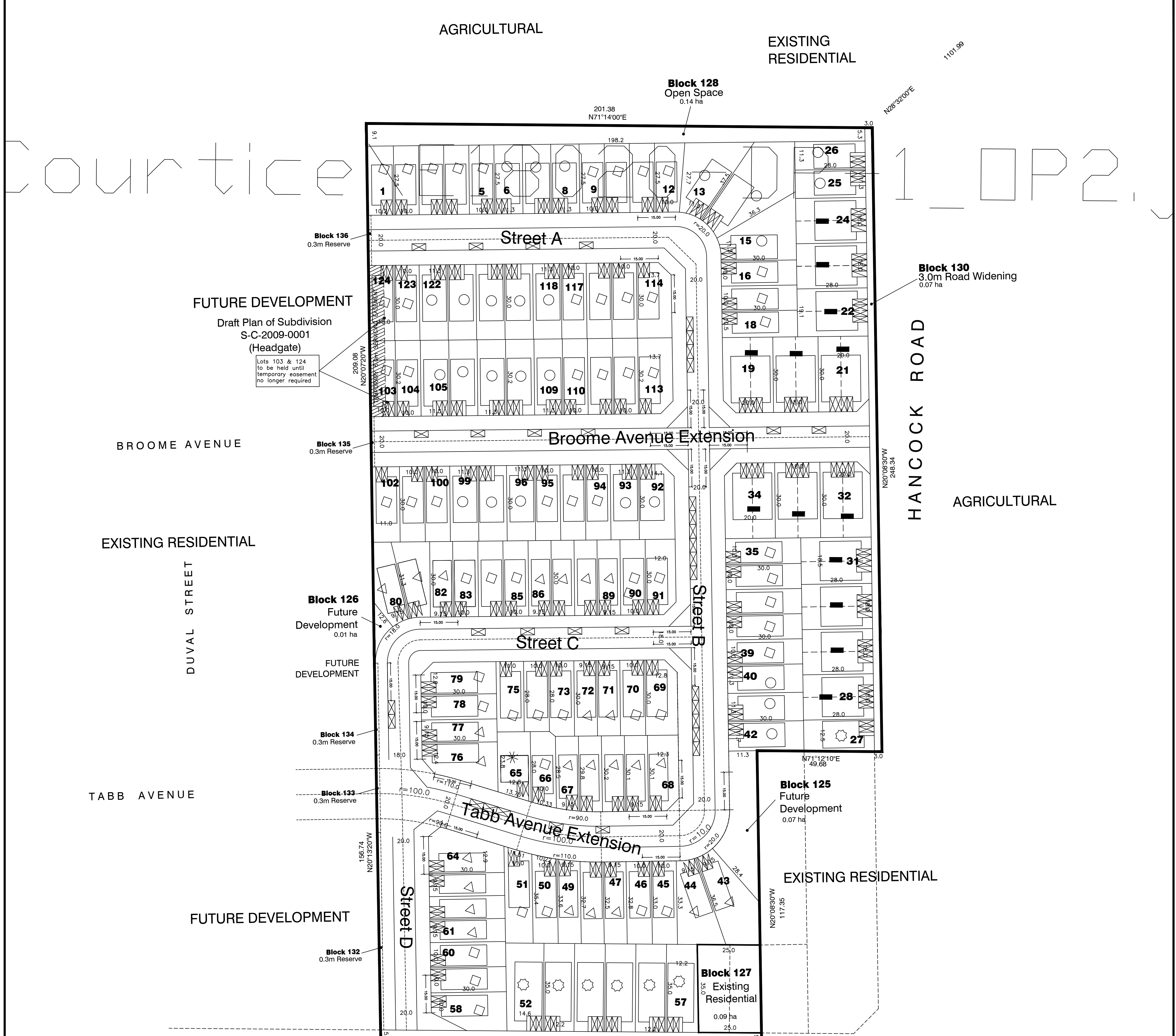
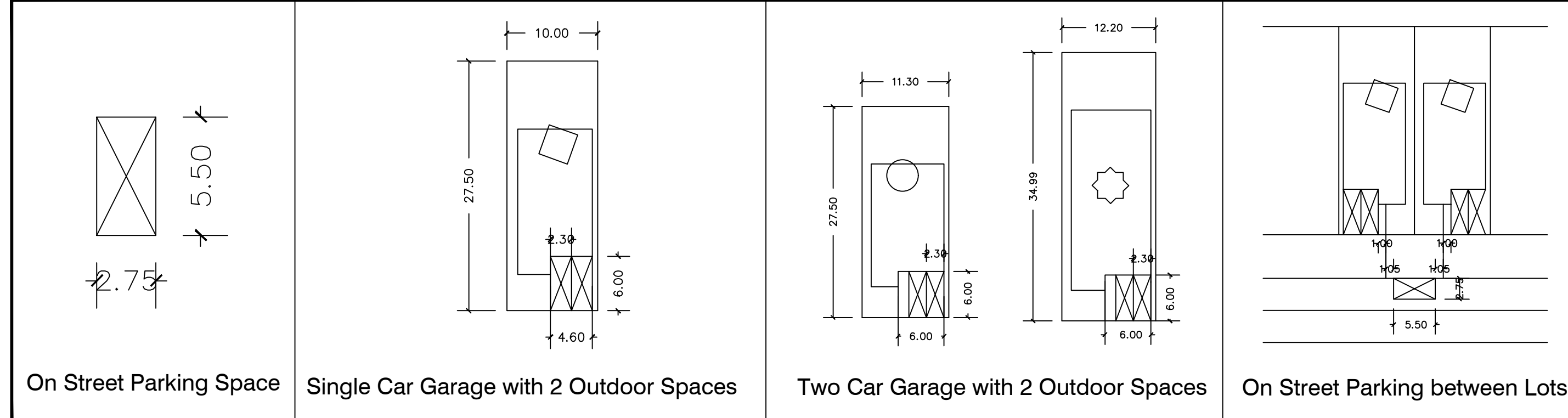


CourtiCe 1 OP 2



PARKING STATS	AMOUNT	UNITS	TOTAL
<b>On-Street Parking Requirement</b>			
Semi-Detached	1 SPOT FOR EVERY 4 UNITS	26	7
Singles	1 SPOT FOR EVERY 4 UNITS	114	29
<b>REQUIRED PARKING TOTAL</b>			36
<b>Proposed On-Street Parking</b>			
Semi-Detached	1 SPOT FOR EVERY 4 UNITS	26	7
Singles	1 SPOT FOR EVERY 4 UNITS	114	29
<b>PROPOSED PARKING TOTAL</b>			36
<b>RESIDENTIAL PARKING PROPOSED</b>			
18.0m Wide Semi-Det. Res.	Single Car Garage with 2 Outdoor Spaces	26	78
9.15m Wide Detached Res.	Single Car Garage with 2 Outdoor Spaces	29	87
10.0m Wide Detached Res.	Single Car Garage with 2 Outdoor Spaces	53	159
11.3m Wide Detached Res.	Two Car Garage with 2 Outdoor Spaces	24	96
12.2m Wide Detached Res.	Two Car Garage with 2 Outdoor Spaces	7	28
Custom Detached Res.	Single Car Garage with 2 Outdoor Spaces	1	3
<b>TOTAL</b>		140	451

**Parking Illustrations**

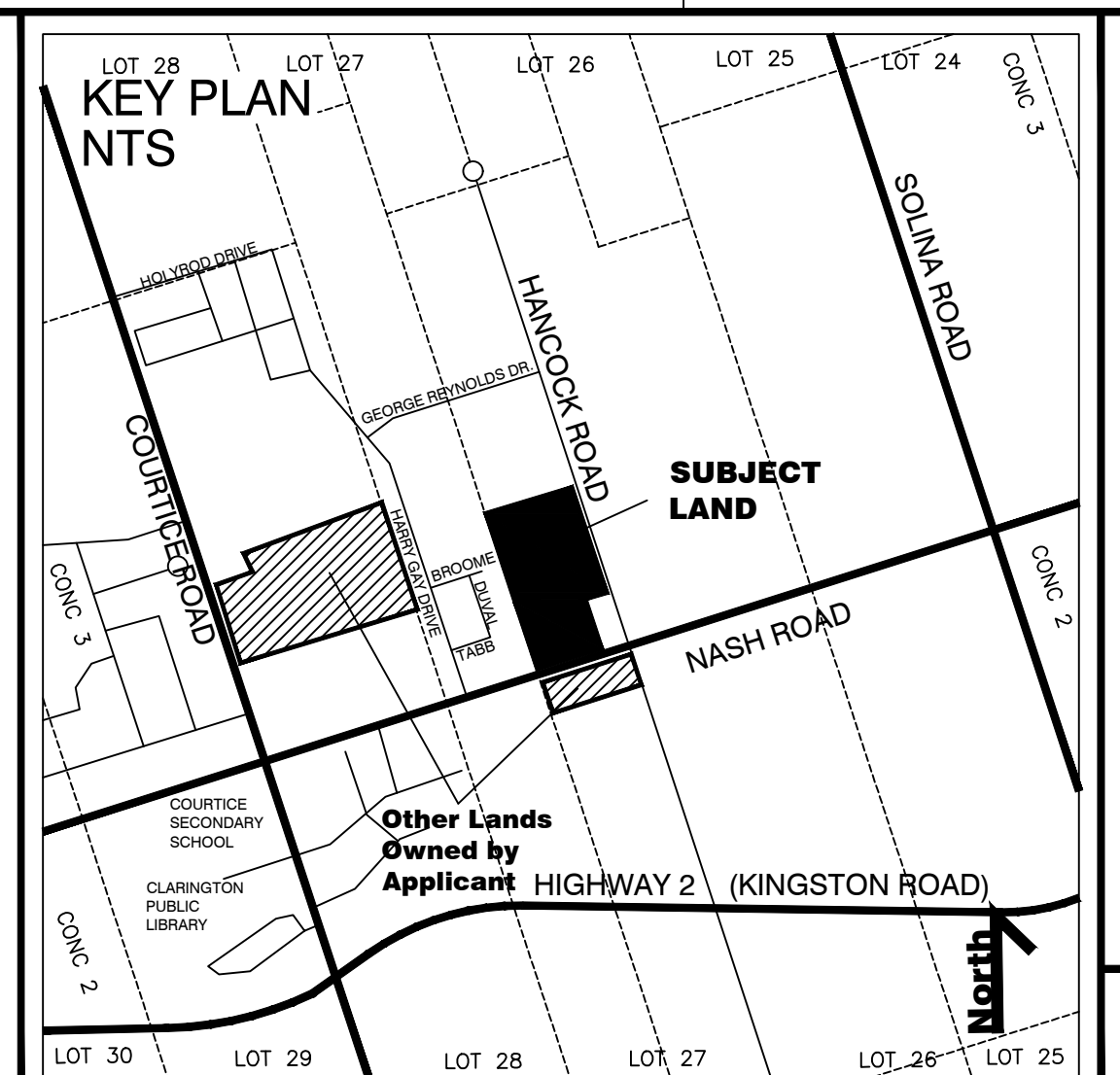


S-C-2018-0003, ZBA2018-0014

# ON-STREET PARKING PLAN

FOR PART OF LOT 27, CONCESSION 3 FORMER TOWNSHIP OF DARLINGTON NOW BEING LOTS 1 TO 6, INCLUSIVE LOTS 12 TO 17, INCLUSIVE AND PART OF LOT 18 REGISTERED PLAN No. 634 MUNICIPALITY OF CLARINGTON REGIONAL MUNICIPALITY OF DURHAM

**June 22, 2020**



Note: All dimensions on curves are chord lengths unless otherwise indicated. Dashed lines representing adjacent future development are conceptual only. Dashed lines representing 0.3m Reserves are exaggerated to illustrate location of reserve.

Scale 1 : 750 (24 x 36)

**OWNER'S AUTHORIZATION**

I AUTHORIZE THIS DRAFT PLAN OF SUBDIVISION TO BE SUBMITTED TO THE MUNICIPALITY OF CLARINGTON FOR APPROVAL.

SEE ORIGINAL FOR SIGNATURE \_\_\_\_\_ DATE \_\_\_\_\_  
 Peter Cohen, President  
 BV Courtice, Inc.

**SURVEYOR'S CERTIFICATE**

I HEREBY CERTIFY THAT THE BOUNDARIES OF THE LAND TO BE SUBDIVIDED AS SHOWN ON THIS PLAN AND THEIR RELATIONSHIP TO THE ADJACENT LANDS ARE ACCURATELY AND CORRECTLY SHOWN.

SEE ORIGINAL FOR SIGNATURE \_\_\_\_\_ DATE \_\_\_\_\_  
 R. Mc. Roe, O.L.S.  
 J. D. Barnes Limited

PLAN PREPARED BY \_\_\_\_\_ DATE \_\_\_\_\_  
 Whitney Dang, BURPI  
 Trolleybus Urban Development

**TROLLEYBUS URBAN DEVELOPMENT**

18M-00161-00