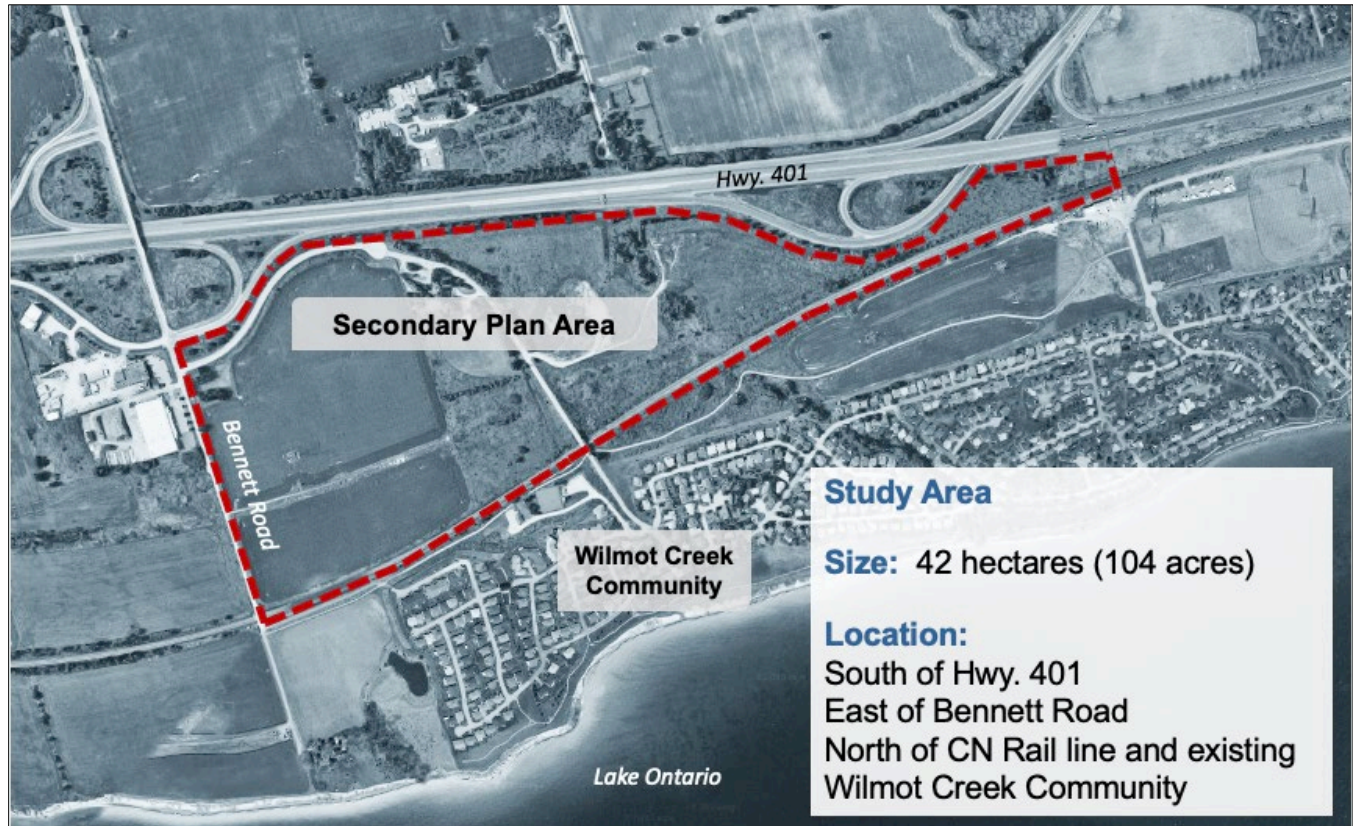


Secondary Plan Project Update – April 2021

Background and Overview

This Secondary Plan Area is being planned separate from the existing Wilmot Creek community.

The Municipality of Clarington has initiated the development of a Secondary Plan for the area south of Hwy. 401, east of Bennett Road, and north of the CN Rail line and existing Wilmot Creek Community. The project is occurring over three phases with completion scheduled for Fall 2021.



The Secondary Plan will create a complete community that will include a range of housing types, a complete street network, a variety of parks and a trail system that will be integrated with the natural heritage system, and retail/commercial amenities within walking distance of residents. The neighbourhood design will promote healthy and active lifestyles by integrating a mix of land uses with active transportation connections.

Due to COVID-19, the original development plans were pushed back, and all consultation meetings are now being held virtually.

Key Changes

Stand-alone community
 The Secondary Plan Area will be separate from the existing Wilmot Creek community.

Change in land ownership
 Rice Development acquired the Wilmot Creek Phase 8 Lands from CAPRIET.

Purpose of Secondary Plan

The Secondary Plan is an opportunity to establish a forward-thinking policy framework for a dynamic mixed-use community. The Secondary Plan will provide the land use planning framework for the development of the study area. The project team will be preparing and refining a draft Emerging Plan for the study area.

What is a Secondary Plan?

The Secondary Plan is a policy document that includes detailed local development policies that guide growth in a defined area. A Secondary Plan establishes:

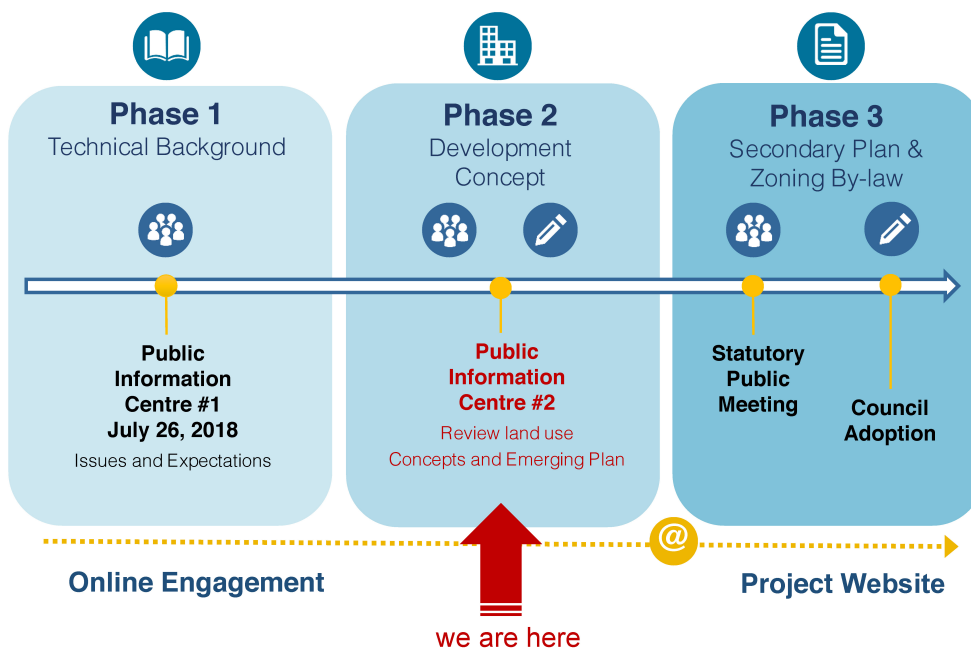
- The appropriate mix of land uses
- The height and density of development
- The road network as well as trails
- The parkland system, and
- Protection for the natural heritage system

Where We Are Now & Next Steps

Since the last Public Information Centre (PIC) in 2018, the Secondary Plan has continued to evolve. Based on the technical background work and what we heard at the first PIC the project team developed and evaluated three options for the Secondary Plan lands. Based on this evaluation, an Emerging Plan has been prepared.

At the second PIC on April 15th, 2021, the project team will share and seek feedback on the Emerging Plan. Following PIC 2, the project team will revise the Emerging Plan and present the final updated plan at a future Open House and Public Meeting. Visit the project webpage www.Clarington.net/WilmotCreek for details on the PIC.

Secondary Plan Process Overview



Contact Us

For more information or to join the project mailing list, email WilmotCreek@clarington.net

or contact:
Lisa Backus or
Carlos Salazar at
905-623-3379.