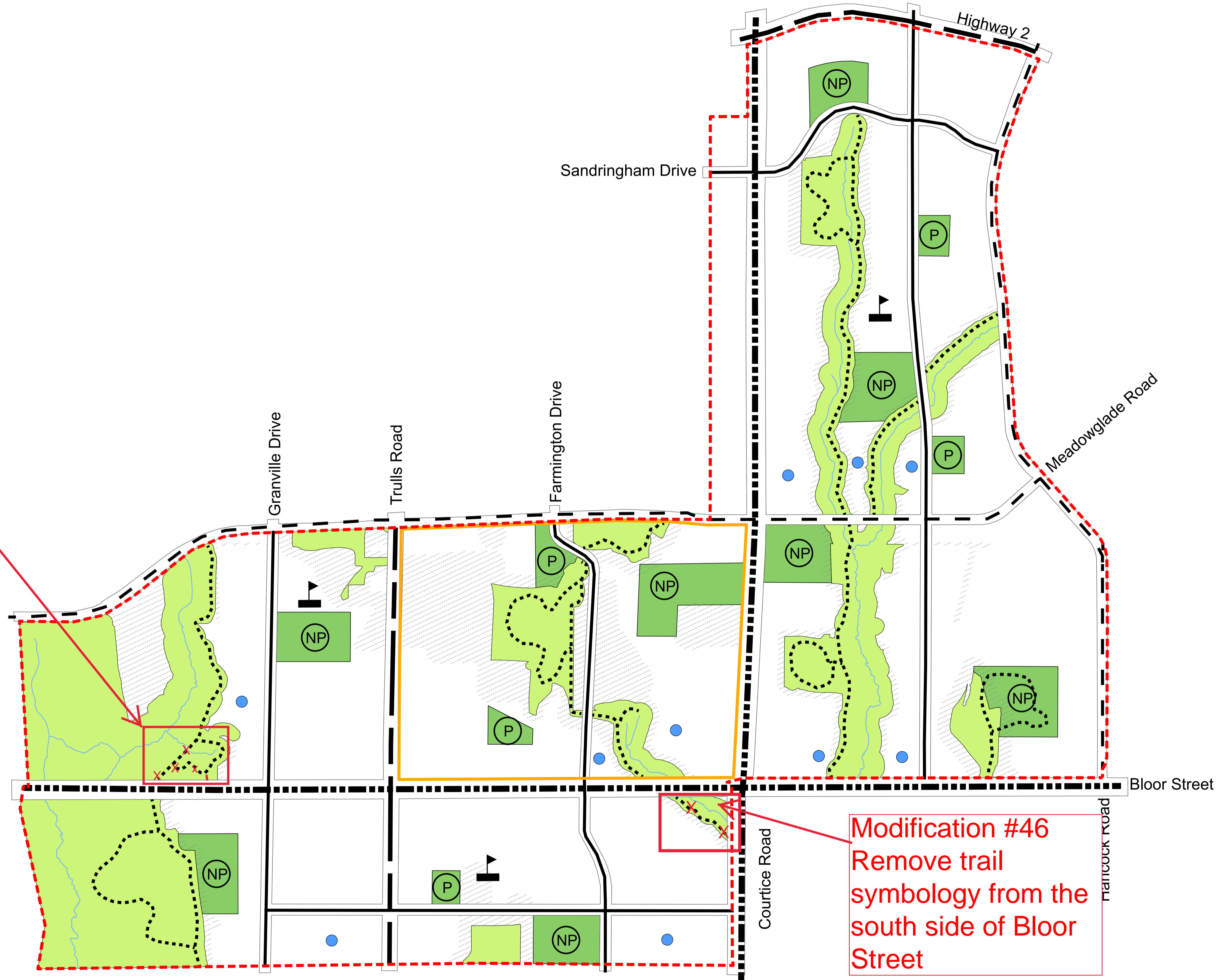
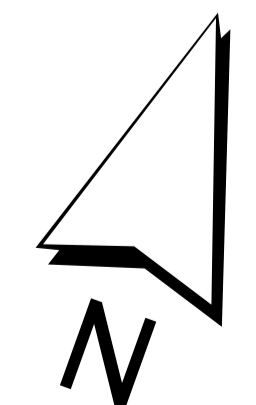


Modification #47
 Straighten out the
 bottom portion of the
 trail and delete the
 loop



Modification #46
 Remove trail
 symbology from the
 south side of Bloor
 Street



- Legend**
- SECS Boundary
 - Environmental Protection Area
 - Environmental Constraint
 - Environmental Study Area**
 - NP Neighbourhood Park
 - P Parkette
 - Arterial A (Dedicated Bicycle Lane)
 - Arterial B (Dedicated Bicycle Lane)
 - Arterial C (Dedicated Bicycle Lane)
 - Collector (On-Street Bicycle Lane)
 - Trail
 - Watercourse
 - Elementary School
 - Stormwater Management Facility (SWF)*

**Schedule B - Transportation, Parks
 and Open Space**
 - Southeast Courtice Secondary Plan -

Note: *Final SWF locations to be determined by Robinson Tooley Subwatershed Study / Landowners
 **Area subject to further environmental study

Legend

- High Density/Mixed Use
- Medium Density Regional Corridor
- Low Density Residential
- Neighbourhood Park
- Parkette
- Environmental Protection Area
- Environmental Constraint
- Environmental Study Area
- Arterial Road
- Collector Road
- Special Local Road
- Local Road
- Rear Lane
- Mid-Block Pedestrian Connection
- Trail
- Stormwater Management Facility
- Elementary School
- Prominent Intersection
- Gateway

Modification # 48
Insert the existing
portion of
Sandringham
Road west of
Courtice Road

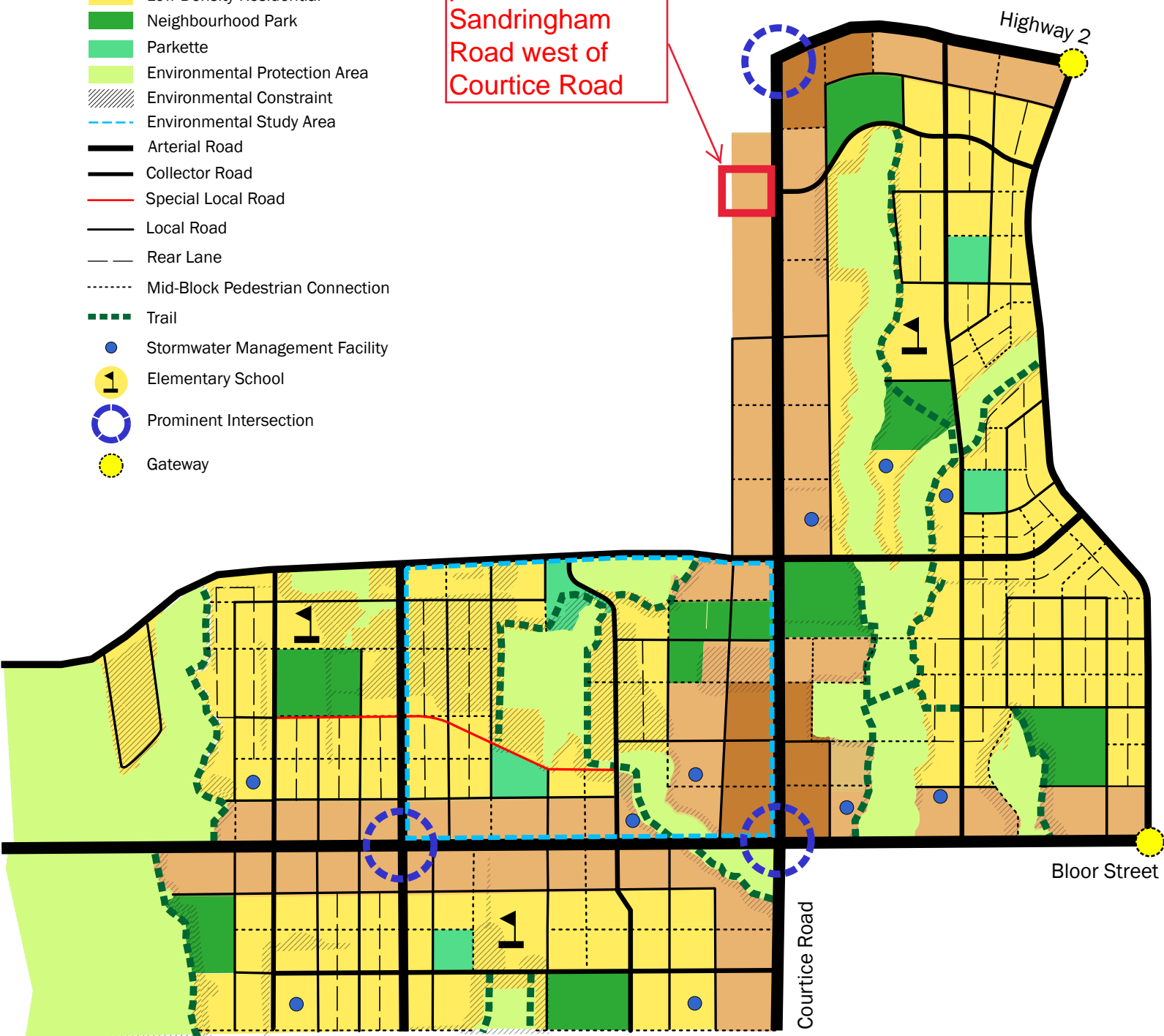
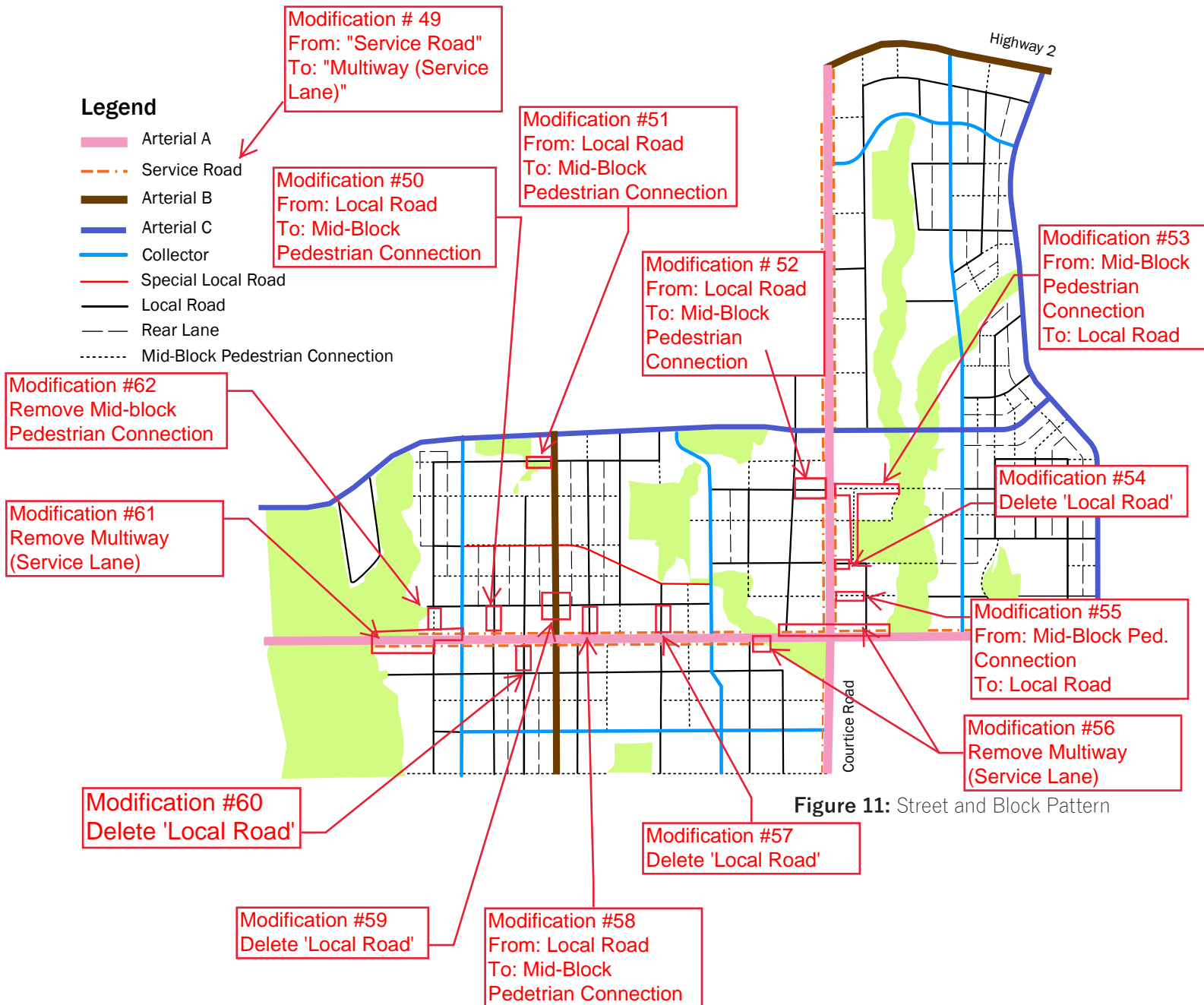


Figure 3: Demonstration Plan



6.4 ACTIVE TRANSPORTATION

Active transportation in Southeast Courtice promotes alternative modes of transportation to motorized vehicles. Opportunities will be provided to the community to access more mobility options and utilize specific infrastructure design to create a comfortable, well connected environment that aims to improve safety. Active transportation refers to all human-powered forms of transportation, including but not limited to walking and cycling. It will be designed to be inclusive for all users and abilities.

The active transportation network consists of the pedestrian, cycling and trail networks, which comprise of both on- and off-street facilities. Please refer to **Figure 51** for a conceptual demonstration of the active transportation network.

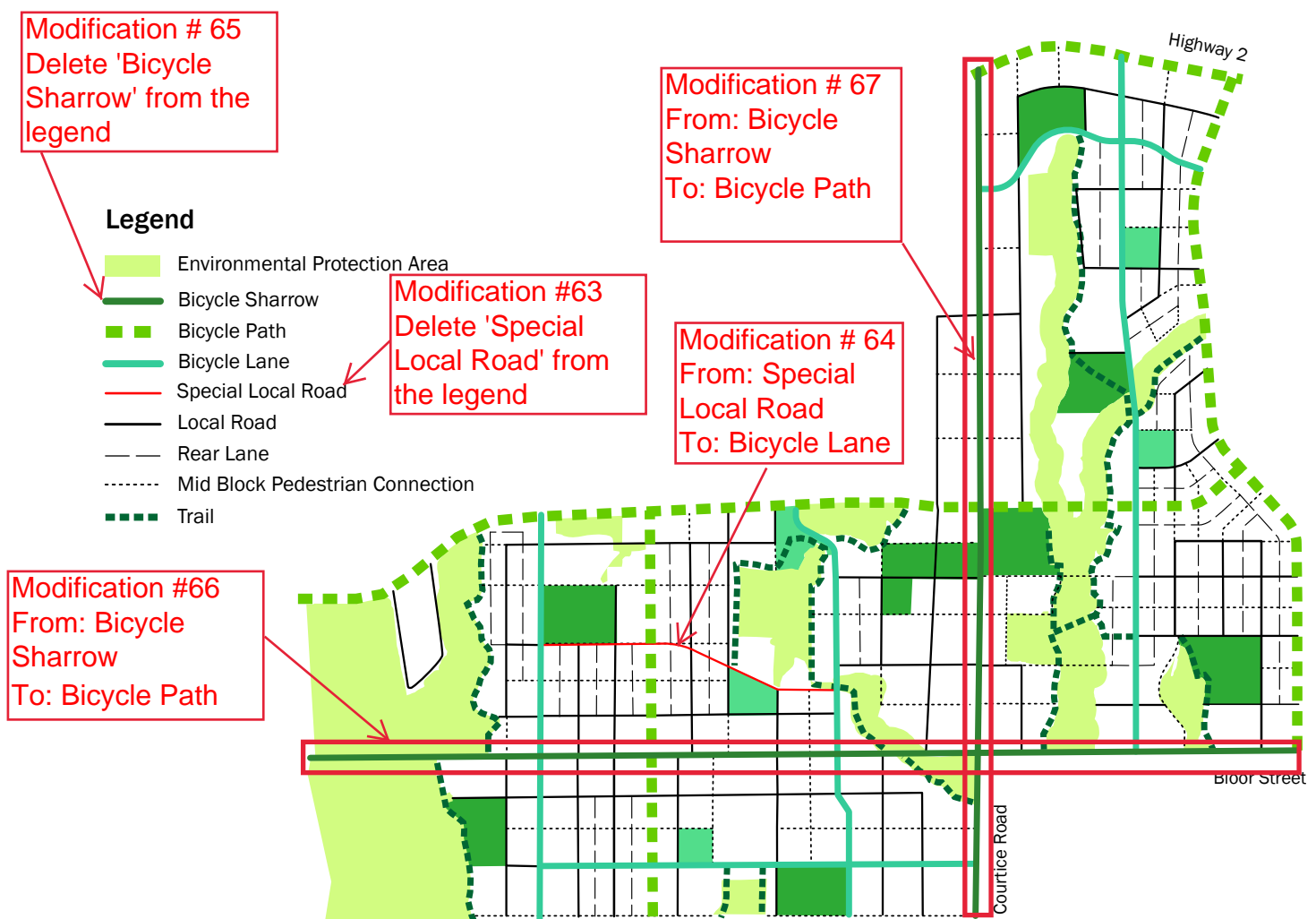


Figure 51: Active Transportation Map

Figure 43: Type A Arterial (Multi-Way) Cross-section and Plan

